

IHCAb™ Gross cystic disease fluid protein-15 (GCDFP-15) (BGT-GCDFP15) mouse mAb

Cat #: B-IMW6661

Size: 100 µL

Storage: Store at -20°C. Avoid repeated freeze / thaw cycles.

Background

induction:By prolactin and androgen; inhibited by estrogen.,similarity:Belongs to the PIP family.,subunit:Monomer.
Interacts with AZGP1.,tissue specificity:Expressed in pathological conditions of the mammary gland and in several exocrine tissues, such as the lacrimal, salivary, and sweat glands.

Product Information

Applications/Dilution: WB 500-2000 IHC-p 1:100-500. IF 1:50-200

Isotype/Source: Mouse, Monoclonal/IgG1, Kappa

Specificity: This antibody detects endogenous levels of human Gross cystic disease fluid protein-15 (GCDFP-15).
Heat-induced epitope retrieval (HIER) TRIS-EDTA of pH8.0 was highly recommended as antigen repair met

Subcellular Location: Secreted

Expression: Expressed in pathological conditions of the mammary gland and in several exocrine tissues, such as the lacrimal, salivary, and sweat glands

Formulation: Liquid in PBS containing 50% glycerol, 0.5% BSA and 0.02% sodium azide.

Storage: Store at -15°C to -25°C

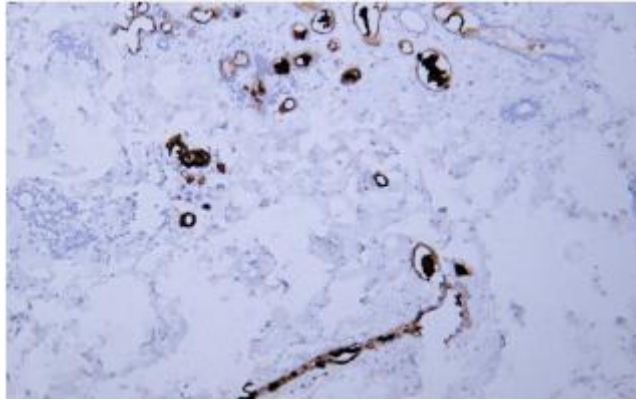


Fig. Human breast tissue was stained with Anti-GCDFP-15 Antibody.

Note:

The product listed herein is for research use only and is not intended for use in human or clinical diagnosis.