

## IHCab™ GLUT-1 (BGT-GLUT1) mouse mAb

Cat #: B-IMW6583

Size: 100 µL

Storage: Store at -20°C. Avoid repeated freeze / thaw cycles.

### Background

This gene encodes a major glucose transporter in the mammalian blood-brain barrier. The encoded protein is found primarily in the cell membrane and on the cell surface, where it can also function as a receptor for human T-cell leukemia virus (HTLV) I and II. Mutations in this gene have been found in a family with paroxysmal exertion-induced dyskinesia.

### Product Information

**Applications/Dilution:** IHC-p 1:100-500. IF 1:50-200

**Isotype/Source:** Mouse, Monoclonal/IgG2a, Kappa

**Specificity:** This antibody detects endogenous levels of human GLUT-1. Heat-induced epitope retrieval (HIER) TRIS-EDTA of pH8.0 was highly recommended as antigen repair method in paraffin section

**Subcellular Location:** Cell membrane ; Multi-pass membrane protein . Melanosome . Photoreceptor inner segment . Localizes primarily at the cell surface (PubMed:18245775, PubMed:19449892, PubMed:23219802, PubMed:25982116, PubMed:24847886). Identified by mass spectrometry in melanosome fractions from stage I to stage IV (PubMed:17081065)

**Expression:** Detected in erythrocytes (at protein level). Expressed at variable levels in many human tissues

**Formulation:** Liquid in PBS containing 50% glycerol, 0.5% BSA and 0.02% sodium azide.

**Storage:** Store at -15°C to -25°C

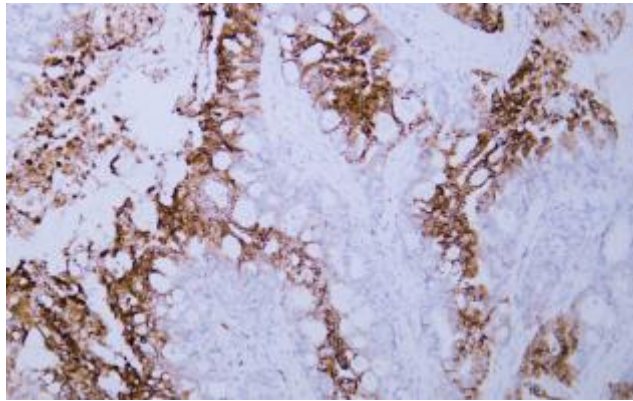


Fig. Human colon carcinoma tissue was stained with Anti-GLUT-1 Antibody

**Note:**

The product listed herein is for research use only and is not intended for use in human or clinical diagnosis.