

## IHCAb™ Cytokeratin 5 (BGT-CK5) mouse mAb

Cat #: B-IMW6578

Size: 100 µL

Storage: Store at -20°C. Avoid repeated freeze / thaw cycles.

### Background

keratin 5(KRT5) Homo sapiens The protein encoded by this gene is a member of the keratin gene family. The type II cytokeratins consist of basic or neutral proteins which are arranged in pairs of heterotypic keratin chains coexpressed during differentiation of simple and stratified epithelial tissues. This type II cytokeratin is specifically expressed in the basal layer of the epidermis with family member KRT14. Mutations in these genes have been associated with a complex of diseases termed epidermolysis bullosa simplex. The type II cytokeratins are clustered in a region of chromosome 12q12-q13.

### Product Information

**Applications/Dilution:** IHC-p 1:100-500, WB 1:500-2000

**Isotype/Source:** Mouse, Monoclonal/IgG2a, Kappa

**Specificity:** This antibody detects endogenous levels of human Cytokeratin 5. Heat-induced epitope retrieval (HIER) TRIS-EDTA of pH8.0 was highly recommended as antigen repair method in paraffin section

**Subcellular Location:** Cytoplasmic, Membranous

**Expression:** Expressed in corneal epithelium (at protein level)

**Formulation:** Liquid in PBS containing 50% glycerol, 0.5% BSA and 0.02% sodium azide.

**Storage:** Store at -15°C to -25°C

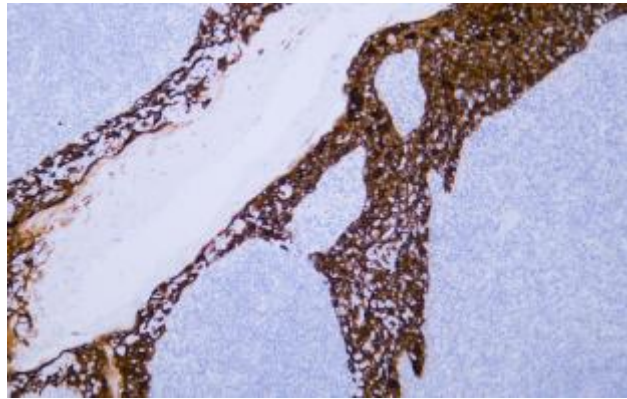


Fig. Human tonsil tissue was stained with Anti-Cytokeratin 5 Antibody

**Note:**

The product listed herein is for research use only and is not intended for use in human or clinical diagnosis.