

## IHCab™ Actin, smooth muscle (SMA) (BGT-SMA) mouse mAb

Cat #: B-IMW6566

Size: 100 µL

Storage: Store at -20°C. Avoid repeated freeze / thaw cycles.

### Background

The protein encoded by this gene belongs to the actin family of proteins, which are highly conserved proteins that play a role in cell motility, structure and integrity. Alpha, beta and gamma actin isoforms have been identified, with alpha actins being a major constituent of the contractile apparatus, while beta and gamma actins are involved in the regulation of cell motility. This actin is an alpha actin that is found in skeletal muscle. Defects in this gene cause aortic aneurysm familial thoracic type 6. Multiple alternatively spliced variants, encoding the same protein, have been identified.

### Product Information

**Applications/Dilution:** IHC-p 1:300-500. IF 1:50-200 WB 1:200-1000

**Isotype/Source:** Mouse, Monoclonal/IgG2a, Kappa

**Specificity:** This antibody detects endogenous levels of human Actin, smooth muscle (SMA). Heat-induced epitope retrieval (HIER) TRIS-EDTA of pH8.0 was highly recommended as antigen repair method in paraffin section

**Subcellular Location:** Cytoplasm, cytoskeleton

**Expression:** Pituitary,Uterus

**Formulation:** Liquid in PBS containing 50% glycerol, 0.5% BSA and 0.02% sodium azide.

**Storage:** Store at -15°C to -25°C

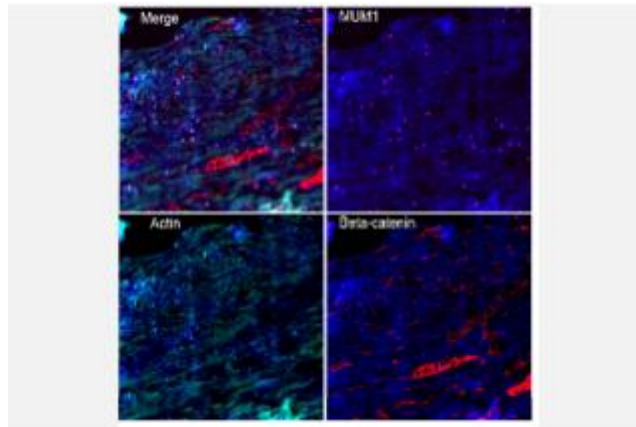


Fig.1. Fluorescence multiplex immunohistochemical analysis of normal human appendix tissue (formalin-fixed paraffin-embedded section). The section was incubated in 3 rounds of staining; in the order of Actin, Beta-catenin, MUM1. each using a separate fluorescent tyramide signal amplification system.

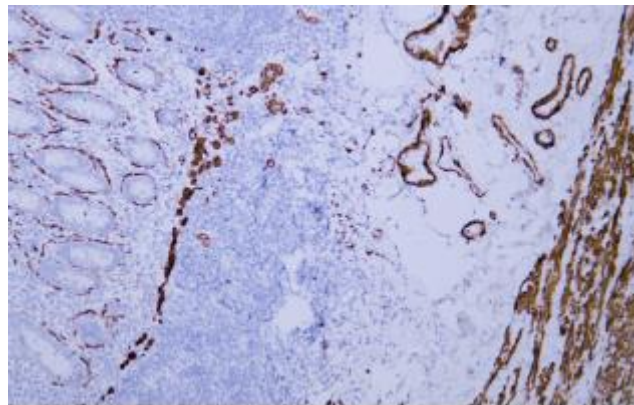


Fig.2. Human appendix tissue was stained with anti-SMA antibody. Secondary Antibody was Biogradetech POLY™ Polymer HRP Goat Anti-Rabbit/Mouse IgG(H+L) Secondary Antibody (B-IMWRS11).

**Note:**

The product listed herein is for research use only and is not intended for use in human or clinical diagnosis.