

IHCAb™ IGF-2 (PT1543) mouse mAb

Cat #: B-IMW6543

Size: 100 µL

Storage: Store at -20°C. Avoid repeated freeze / thaw cycles.

Background

This gene encodes a member of the insulin family of polypeptide growth factors, which are involved in development and growth. It is an imprinted gene, expressed only from the paternal allele, and epigenetic changes at this locus are associated with Wilms tumour, Beckwith-Wiedemann syndrome, rhabdomyosarcoma, and Silver-Russell syndrome. A read-through INS-IGF2 gene exists, whose 5' region overlaps the INS gene and the 3' region overlaps this gene. Alternatively spliced transcript variants encoding different isoforms have been found for this gene.

Product Information

Applications/Dilution: IHC-p 1:100-500. IF 1:50-200

Isotype/Source: Mouse, Monoclonal/IgG2b, Kappa

Specificity: This antibody detects endogenous levels of human IGF-2. Heat-induced epitope retrieval (HIER) TRIS-EDTA of pH8.0 was highly recommended as antigen repair method in paraffin section

Subcellular Location: Secreted

Expression: Expressed in heart, placenta, lung, liver, muscle, kidney, tongue, limb, eye and pancreas.

Formulation: Liquid in PBS containing 50% glycerol, 0.5% BSA and 0.02% sodium azide.

Storage: Store at -15°C to -25°C

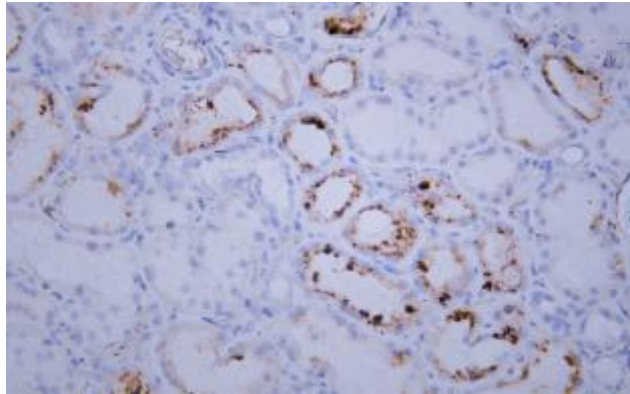


Fig. Human kidney tissue was stained with Anti-IGF-2 Antibody.

Note:

The product listed herein is for research use only and is not intended for use in human or clinical diagnosis.