

## IHCAb™ Parathyroid Hormone (PTH) (BGT-PTH) mouse mAb

Cat #: B-IMW6471

Size: 100 µL

Storage: Store at -20°C. Avoid repeated freeze / thaw cycles.

### Background

This gene encodes a member of the parathyroid family of proteins. The encoded preproprotein is proteolytically processed to generate a protein that binds to the parathyroid hormone/parathyroid hormone-related peptide receptor and regulates blood calcium and phosphate levels. Excess production of the encoded protein, known as hyperparathyroidism, can result in hypercalcemia and kidney stones. On the other hand, defective processing of the encoded protein may lead to hypoparathyroidism, which can result in hypocalcemia and numbness. Alternative splicing results in multiple transcript variants.

### Product Information

**Applications/Dilution:** IHC-p 1:100-500. IF 1:50-200

**Isotype/Source:** Mouse, Monoclonal/IgG1, Kappa

**Specificity:** This antibody detects endogenous levels of human Parathyroid Hormone (PTH). Heat-induced epitope retrieval (HIER) TRIS-EDTA of pH8.0 was highly recommended as antigen repair method in paraffin section

**Subcellular Location:** Secreted

**Formulation:** Liquid in PBS containing 50% glycerol, 0.5% BSA and 0.02% sodium azide.

**Storage:** Store at -15°C to -25°C

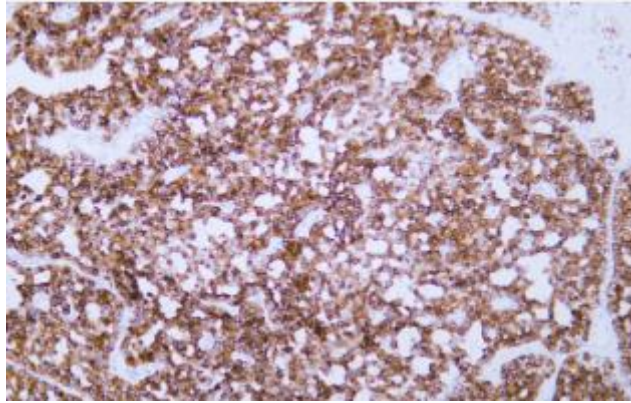


Fig.1. Human parathyroidoma tissue was stained with Anti-Parathyroid Hormone Antibody

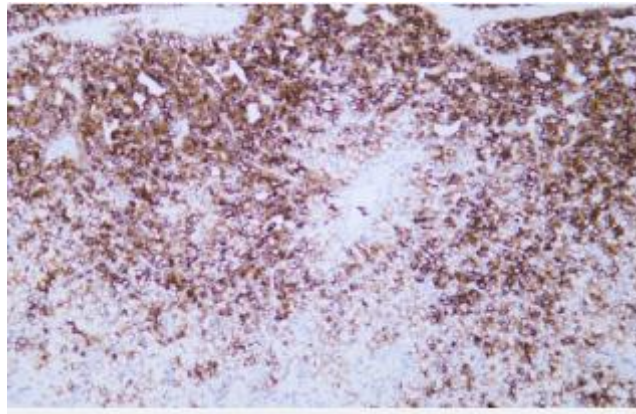


Fig.2. Human parathyroidoma tissue was stained with Anti-Parathyroid Hormone Antibody

**Note:**

The product listed herein is for research use only and is not intended for use in human or clinical diagnosis.