

## IHCab™ S100A4 (BGT-S100A4) mouse mAb

Cat #: B-IMW6216

Size: 100 µL

Storage: Store at -20°C. Avoid repeated freeze / thaw cycles.

### Background

S100 calcium binding protein A4(S100A4) Homo sapiens The protein encoded by this gene is a member of the S100 family of proteins containing 2 EF-hand calcium-binding motifs. S100 proteins are localized in the cytoplasm and/or nucleus of a wide range of cells, and involved in the regulation of a number of cellular processes such as cell cycle progression and differentiation. S100 genes include at least 13 members which are located as a cluster on chromosome 1q21. This protein may function in motility, invasion, and tubulin polymerization. Chromosomal rearrangements and altered expression of this gene have been implicated in tumor metastasis. Multiple alternatively spliced variants, encoding the same protein, have been identified.

### Product Information

**Applications/Dilution:** IHC-p 1:100-500. IF 1:50-200

**Isotype/Source:** Mouse, Monoclonal/IgG1, Kappa

**Specificity:** This antibody detects endogenous levels of human S100A4. Heat-induced epitope retrieval (HIER) Citrate buffer of pH6.0 was highly recommended as antigen repair method in paraffin section

**Subcellular Location:** Secreted . Nucleus . Cytoplasm

**Expression:** Ubiquitously expressed

**Formulation:** Liquid in PBS containing 50% glycerol, 0.5% BSA and 0.02% sodium azide.

**Storage:** Store at -15°C to -25°C

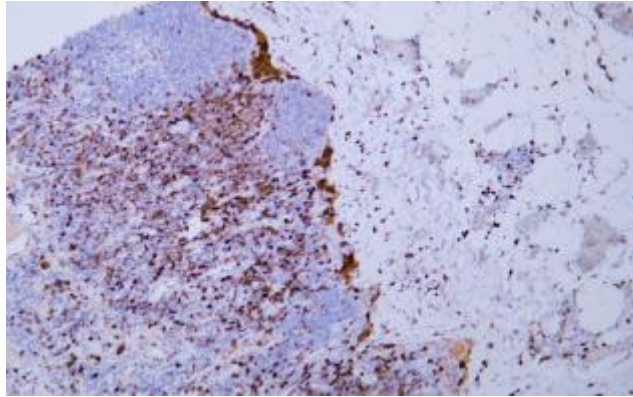


Fig. Human malignant mesothelioma tissue was stained with Anti-S100A4 Antibody

**Note:**

The product listed herein is for research use only and is not intended for use in human or clinical diagnosis.