

IHCAb™ PGP 9.5 (BGT-PGP9.5) mouse mAb

Cat #: B-IMW6209

Size: 100 µL

Storage: Store at -20°C. Avoid repeated freeze / thaw cycles.

Background

The protein encoded by this gene belongs to the peptidase C12 family. This enzyme is a thiol protease that hydrolyzes a peptide bond at the C-terminal glycine of ubiquitin. This gene is specifically expressed in the neurons and in cells of the diffuse neuroendocrine system. Mutations in this gene may be associated with Parkinson disease.

Product Information

Applications/Dilution: IHC-p 1:100-500, WB 1:200-1000, IF 1:100-500

Isotype/Source: Mouse, Monoclonal/IgG1, Kappa

Specificity: This antibody detects endogenous levels of human PGP 9.5. Heat-induced epitope retrieval (HIER) TRIS-EDTA of pH8.0 was highly recommended as antigen repair method in paraffin section

Subcellular Location: Cytoplasm . Endoplasmic reticulum membrane ; Lipid-anchor . About 30% of total UCHL1 is associated with membranes in brain

Expression: Found in neuronal cell bodies and processes throughout the neocortex (at protein level). Expressed in neurons and cells of the diffuse neuroendocrine system and their tumors. Weakly expressed in ovary. Down-regulated in brains from Parkinson disease and Alzheimer disease patients.

Formulation: Liquid in PBS containing 50% glycerol, 0.5% BSA and 0.02% sodium azide.

Storage: Store at -15°C to -25°C

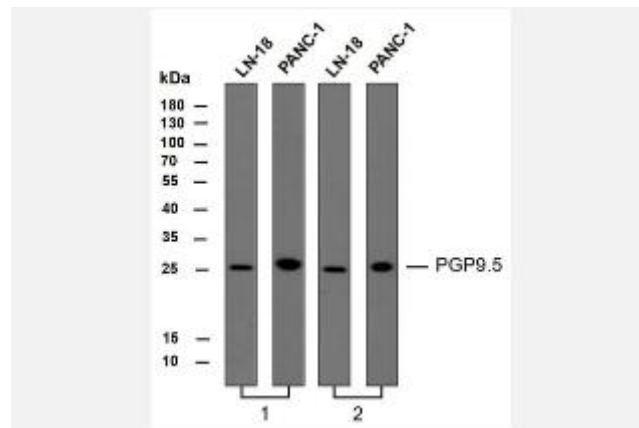


Fig.1. Various whole cell lysates were separated by 12% SDS-PAGE, and the membrane was blotted with anti-PGP9.5 antibody. The HRP-conjugated anti-Mouse IgG antibody was used to detect the antibody. Lane 1: Anti-PGP9.5 antibody at 1ug/ml Lane 2: Anti-PGP9.5 antibody at 0.5ug/ml Predicted band size: 25 kDa



Fig.2. Human appendix tissue was stained with Anti-PGP 9.5 Antibody

Note:

The product listed herein is for research use only and is not intended for use in human or clinical diagnosis.