

## IHCAb™ PD-1 (BGT-PD1) mouse mAb

Cat #: B-IMW6208

Size: 100 µL

Storage: Store at -20°C. Avoid repeated freeze / thaw cycles.

### Background

This gene encodes a cell surface membrane protein of the immunoglobulin superfamily. This protein is expressed in pro-B-cells and is thought to play a role in their differentiation. In mice, expression of this gene is induced in the thymus when anti-CD3 antibodies are injected and large numbers of thymocytes undergo apoptosis. Mice deficient for this gene bred on a BALB/c background developed dilated cardiomyopathy and died from congestive heart failure. These studies suggest that this gene product may also be important in T cell function and contribute to the prevention of autoimmune diseases.

### Product Information

**Applications/Dilution:** IHC-p 1:100-500, WB 1:200-1000;IF ICC 1:100-500

**Isotype/Source:** Mouse, Monoclonal/IgG1, Kappa

**Specificity:** This antibody detects endogenous levels of human PD-1. Heat-induced epitope retrieval (HIER) Citrate buffer of pH6.0 was highly recommended as antigen repair method in paraffin section

**Subcellular Location:** Cell membrane ; Single-pass type I membrane protein

**Expression:** Placenta,Pooled tissue,Uterine cervix

**Formulation:** Liquid in PBS containing 50% glycerol, 0.5% BSA and 0.02% sodium azide.

**Storage:** Store at -15°C to -25°C

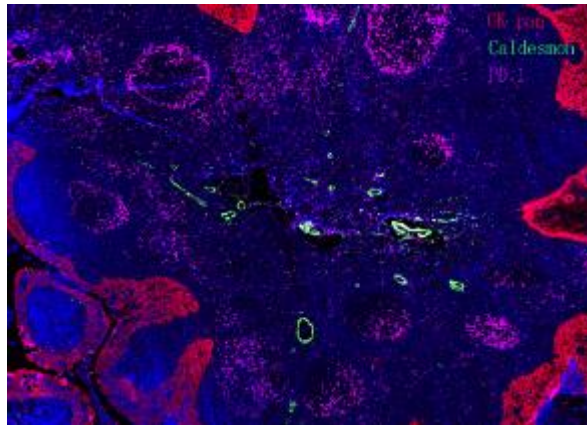


Fig. Fluorescence multiplex immunohistochemical analysis of normal human appendix tissue (formalin-fixed paraffin-embedded section). The section was incubated in 3 rounds of staining; in the order of CK PAN, PD-1, Caldesmon pan, each using a separate fluorescent tyramide signal amplification system.

**Note:**

The product listed herein is for research use only and is not intended for use in human or clinical diagnosis.