

IHCab™ MutS Protein Homolog 6 (MSH6) (BGT-MSH6) mouse mAb

Cat #: B-IMW6195

Size: 100 µL

Storage: Store at -20°C. Avoid repeated freeze / thaw cycles.

Background

This gene encodes a member of the DNA mismatch repair MutS family. In *E. coli*, the MutS protein helps in the recognition of mismatched nucleotides prior to their repair. A highly conserved region of approximately 150 aa, called the Walker-A adenine nucleotide binding motif, exists in MutS homologs. The encoded protein heterodimerizes with MSH2 to form a mismatch recognition complex that functions as a bidirectional molecular switch that exchanges ADP and ATP as DNA mismatches are bound and dissociated. Mutations in this gene may be associated with hereditary nonpolyposis colon cancer, colorectal cancer, and endometrial cancer. Transcripts variants encoding different isoforms have been described.

Product Information

Applications/Dilution: IHC-p 1:100-500, WB 1:500-1000, IF 1:500-200

Isotype/Source: Mouse, Monoclonal/IgG1, Kappa

Specificity: This antibody detects endogenous levels of human MutS Protein Homolog 6(MSH6). Heat-induced epitope retrieval (HIER) TRIS-EDTA of pH8.0 was highly recommended as antigen repair method in paraffin sect

Subcellular Location: Nucleus . Chromosome . Associates with H3K36me3 via its PWWP domain

Expression: Epithelium,Placenta,Pooled,Testis

Formulation: Liquid in PBS containing 50% glycerol, 0.5% BSA and 0.02% sodium azide.

Storage: Store at -15°C to -25°C

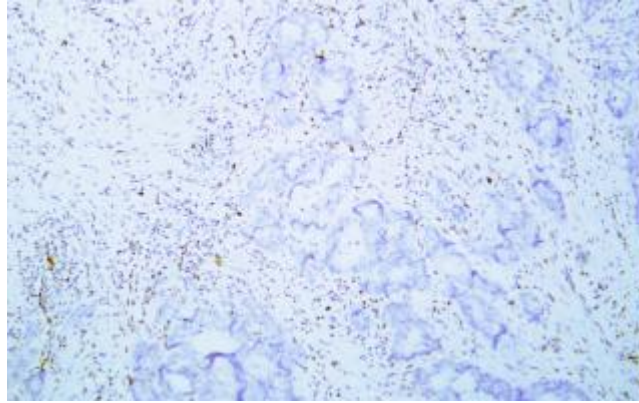


Fig.1. Human colon adenocarcinoma tissue with loss of MSH6 expression was stained with Anti-MSH6 Antibody

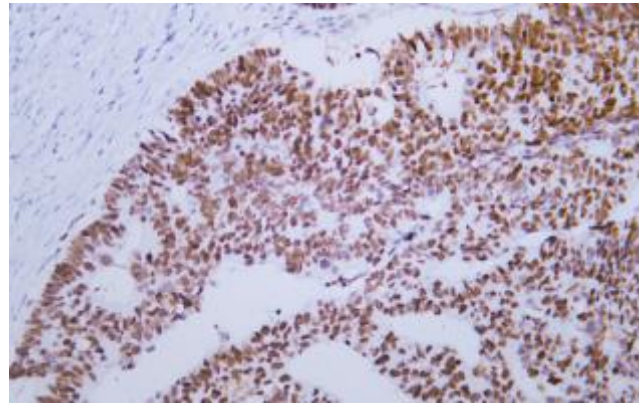


Fig.2. Human colon carcinoma tissue was stained with Anti-MSH6 Antibody

Note:

The product listed herein is for research use only and is not intended for use in human or clinical diagnosis.