

## IHCAb™ Cytokeratin 7 (BGT-CK7) mouse mAb

Cat #: B-IMW6169

Size: 100 µL

Storage: Store at -20°C. Avoid repeated freeze / thaw cycles.

### Background

keratin 7(KRT7) Homo sapiens The protein encoded by this gene is a member of the keratin gene family. The type II cytokeratins consist of basic or neutral proteins which are arranged in pairs of heterotypic keratin chains coexpressed during differentiation of simple and stratified epithelial tissues. This type II cytokeratin is specifically expressed in the simple epithelia lining the cavities of the internal organs and in the gland ducts and blood vessels. The genes encoding the type II cytokeratins are clustered in a region of chromosome 12q12-q13. Alternative splicing may result in several transcript variants; however, not all variants have been fully described.

### Product Information

**Applications/Dilution:** IHC-p 1:300-500, WB 1:500-2000

**Isotype/Source:** Mouse, Monoclonal/IgG2b, Kappa

**Specificity:** This antibody detects endogenous levels of human Cytokeratin 7. Heat-induced epitope retrieval (HIER) TRIS-EDTA of pH8.0 was highly recommended as antigen repair method in paraffin section

**Subcellular Location:** Cytoplasm

**Expression:** Expressed in cultured epidermal, bronchial and mesothelial cells but absent in colon, ectocervix and liver. Observed throughout the glandular cells in the junction between stomach and esophagus but is absent in the esophagus

**Formulation:** Liquid in PBS containing 50% glycerol, 0.5% BSA and 0.02% sodium azide.

**Storage:** Store at -15°C to -25°C

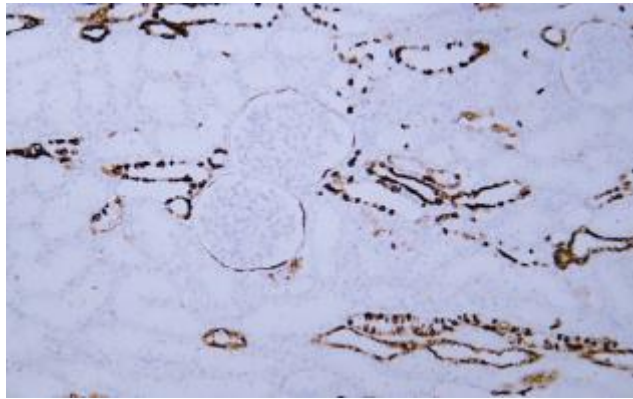


Fig.1. Human kidney tissue was stained with Anti-Cytokeratin 7 Antibody

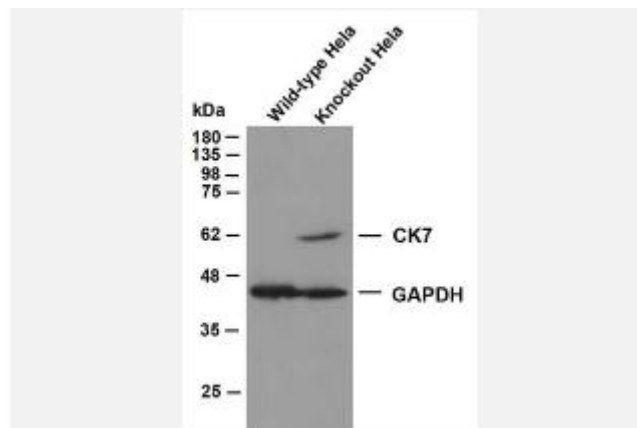


Fig.2. Various whole cell lysates were separated by 10% SDS-PAGE, and the membrane was blotted with anti-CK7 and anti-GAPDH antibody. The HRP-conjugated anti-Mouse IgG antibody was used to detect the antibody. Lane 1 : CK7 knockout HeLa cell lysate Lane 2 : Wide type HeLa cell lysate Predicted band size: 51 kDa Observed band size:: 51 kDa

**Note:**

The product listed herein is for research use only and is not intended for use in human or clinical diagnosis.