

IHCAb™ Cytokeratin 1 (BGT-CK1) mouse mAb

Cat #: B-IMW6160

Size: 100 µL

Storage: Store at -20°C. Avoid repeated freeze / thaw cycles.

Background

keratin 1(KRT1) Homo sapiens The protein encoded by this gene is a member of the keratin gene family. The type II cytokeratins consist of basic or neutral proteins which are arranged in pairs of heterotypic keratin chains coexpressed during differentiation of simple and stratified epithelial tissues. This type II cytokeratin is specifically expressed in the spinous and granular layers of the epidermis with family member KRT10 and mutations in these genes have been associated with bullous congenital ichthyosiform erythroderma. The type II cytokeratins are clustered in a region of chromosome 12q12-q13.

Product Information

Applications/Dilution: IHC-p 1:100-500. IF 1:50-200

Isotype/Source: Mouse, Monoclonal/IgG1, Kappa

Specificity: This antibody detects endogenous levels of human Cytokeratin 1. Heat-induced epitope retrieval (HIER) Citrate buffer of pH6.0 was highly recommended as antigen repair method in paraffin section

Subcellular Location: Cell membrane . Located on plasma membrane of neuroblastoma NMB7 cells

Expression: The source of this protein is neonatal foreskin. The 67-kDa type II keratins are expressed in terminally differentiating epidermis.

Formulation: Liquid in PBS containing 50% glycerol, 0.5% BSA and 0.02% sodium azide .

Storage: Store at -15°C to -25°C

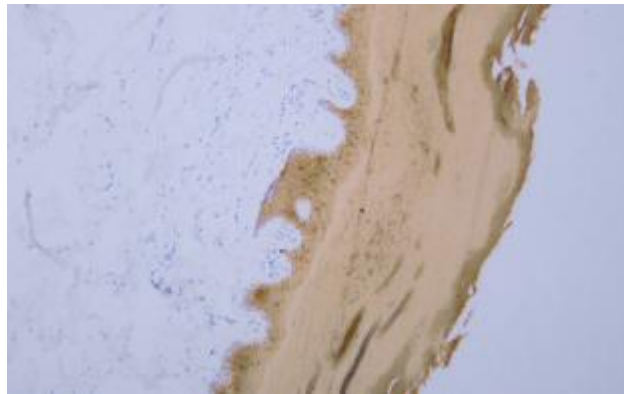


Fig. Human skin tissue was stained with Anti-Cytokeratin 1 Antibody.

Note:

The product listed herein is for research use only and is not intended for use in human or clinical diagnosis.