

IHCAb™ CD43 (BGT-CD43) mouse mAb

Cat #: B-IMW6154

Size: 100 µL

Storage: Store at -20°C. Avoid repeated freeze / thaw cycles.

Background

The protein encoded by this gene is a major sialoglycoprotein found on the surface of thymocytes, T lymphocytes, monocytes, granulocytes, and some B lymphocytes. It may be part of a physiologic ligand-receptor complex involved in T-cell activation. During T-cell activation, this protein is actively removed from the T-cell-APC (antigen-presenting cell) contact site, suggesting a negative regulatory role in adaptive immune response.

Product Information

Applications/Dilution: IHC-p 1:100-500, WB 1:200-1000. IF 1:50-200

Isotype/Source: Mouse, Monoclonal/IgG1, Kappa

Specificity: This antibody detects endogenous levels of human CD43. Heat-induced epitope retrieval (HIER) Citrate buffer of pH6.0 was highly recommended as antigen repair method in paraffin section

Subcellular Location: Membrane ; Single-pass type I membrane protein . Cell projection, microvillus . Cell projection, uropodium . Localizes to the uropodium and microvilli via its interaction with ERM proteins (EZR, RDX and MSN). . ; [CD43 cytoplasmic tail]: Nucleus . Nucleus, PML body . The sumoylated form localizes to the PML body

Expression: Cell surface of thymocytes, T-lymphocytes, neutrophils, plasma cells and myelomas..

Formulation: Liquid in PBS containing 50% glycerol, 0.5% BSA and 0.02% sodium azide.

Storage: Store at -15°C to -25°C

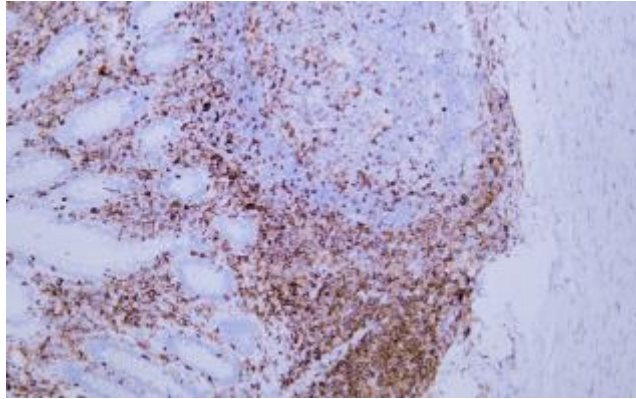


Fig.1. Human appendix tissue was stained with Anti-CD43 Antibody.

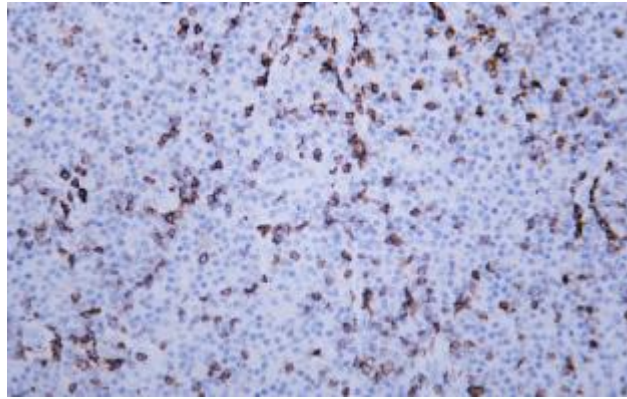


Fig.2. Human lymphoma tissue was stained with Anti-CD43 Antibody.

Note:

The product listed herein is for research use only and is not intended for use in human or clinical diagnosis.