

## IHCAb™ Somatostatin (BGT150) Mouse mAb

Cat #: B-IMW6126

Size: 100 µL

Storage: Store at -20°C. Avoid repeated freeze / thaw cycles.

### Background

The hormone somatostatin has active 14 aa and 28 aa forms that are produced by alternate cleavage of the single preproprotein encoded by this gene. Somatostatin is expressed throughout the body and inhibits the release of numerous secondary hormones by binding to high-affinity G-protein-coupled somatostatin receptors. This hormone is an important regulator of the endocrine system through its interactions with pituitary growth hormone, thyroid stimulating hormone, and most hormones of the gastrointestinal tract. Somatostatin also affects rates of neurotransmission in the central nervous system and proliferation of both normal and tumorigenic cells.

### Product Information

**Applications/Dilution:** IHC-p 1:100-500. IF 1:50-200

**Isotype/Source:** Mouse, Monoclonal/IgG2b, Kappa

**Specificity:** This antibody detects endogenous levels of human Somatostatin. Heat-induced epitope retrieval (HIER) Citrate buffer of pH6.0 was highly recommended as antigen repair method in paraffin section.

**Subcellular Location:** Secreted

**Expression:** Fetal brain.

**Formulation:** Liquid in PBS containing 50% glycerol, 0.5% BSA and 0.02% sodium azide.

**Storage:** Store at -15°C to -25°C

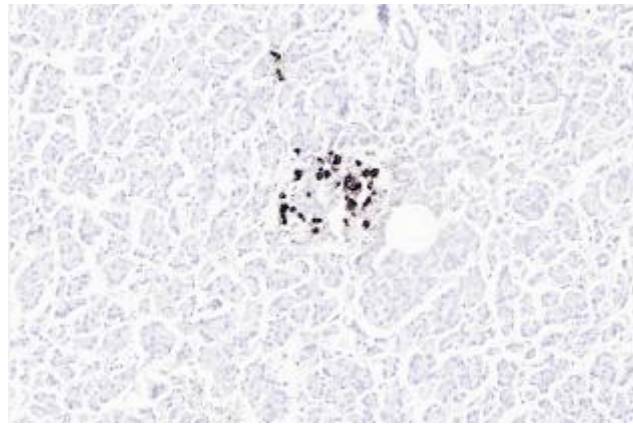


Fig. Human pancreas tissue was stained with Somatostatin Antibody

**Note:**

The product listed herein is for research use only and is not intended for use in human or clinical diagnosis.