

IHCAb™ Insulin (BGT-INS) mouse mAb

Cat #: B-IMW6121

Size: 100 µL

Storage: Store at -20°C. Avoid repeated freeze / thaw cycles.

Background

After removal of the precursor signal peptide, proinsulin is post-translationally cleaved into three peptides: the B chain and A chain peptides, which are covalently linked via two disulfide bonds to form insulin, and C-peptide. Binding of insulin to the insulin receptor (INSR) stimulates glucose uptake. A multitude of mutant alleles with phenotypic effects have been identified. There is a read-through gene, INS-IGF2, which overlaps with this gene at the 5' region and with the IGF2 gene at the 3' region. Alternative splicing results in multiple transcript variants.

Product Information

Applications/Dilution: IHC-p 1:100-500, WB 1:200-1000. IF 1:50-200

Isotype/Source: Mouse, Monoclonal/IgG2b, Kappa

Specificity: This antibody detects endogenous levels of human Insulin. Heat-induced epitope retrieval (HIER) Citrate buffer of pH6.0 was highly recommended as antigen repair method in paraffin section.

Subcellular Location: Secreted

Expression: Blood,Liver,Muscle,Pancreas

Formulation: Liquid in PBS containing 50% glycerol, 0.5% BSA and 0.02% sodium azide.

Storage: Store at -15°C to -25°C

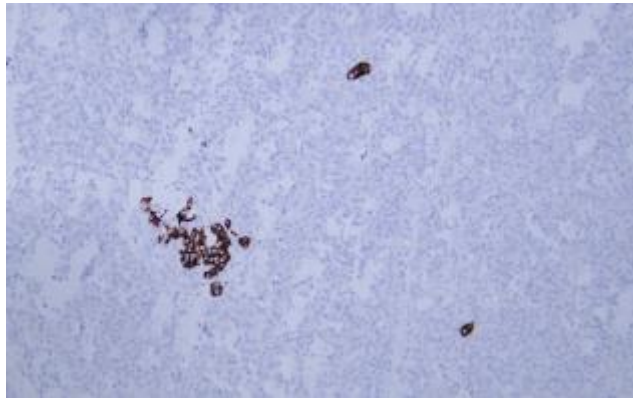


Fig. Human pancreas tissue was stained with Anti-Insulin Antibody

Note:

The product listed herein is for research use only and is not intended for use in human or clinical diagnosis.