

IHCab™ BOB.1 (BGT-BOB1) mouse mAb

Cat #: B-IMW6111

Size: 100 µL

Storage: Store at -20°C. Avoid repeated freeze / thaw cycles.

Background

disease:A chromosomal aberration involving POU2AF1/OBF1 may be a cause of a form of B-cell leukemia. Translocation t(3;11)(q27;q23) with BCL6.,function:Transcriptional coactivator that specifically associates with either OCT1 or OCT2. It boosts the OCT1 mediated promoter activity and to a lesser extent, that of OCT2. It has no intrinsic DNA-binding activity. It recognizes the POU domains of OCT1 and OCT2. It is essential for the response of B-cells to antigens and required for the formation of germinal centers.,PTM:Ubiquitinated; mediated by SIAH1 or SIAH2 and leading to its subsequent proteasomal degradation.,similarity:Belongs to the POU2AF1 family.,tissue specificity:B-cell specific.

Product Information

Applications/Dilution: IHC-p 1:100-500. IF 1:50-200

Isotype/Source: Mouse, Monoclonal/IgG2a, Kappa

Specificity: This antibody detects endogenous levels of human BOB.1. Heat-induced epitope retrieval (HIER) Citrate buffer of pH6.0 was highly recommended as antigen repair method in paraffin section.

Subcellular Location: Nucleus

Expression: B-cell specific (PubMed:7779176, PubMed:7859290). Detected in mainly in spleen, but also in thymus, peripheral blood leukocyte and small intestine (PubMed:7779176, PubMed:7859290)

Formulation: Liquid in PBS containing 50% glycerol, 0.5% BSA and 0.02% sodium azide.

Storage: Store at -15°C to -25°C

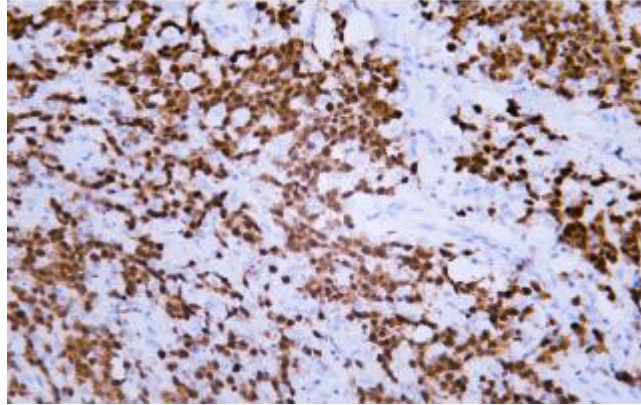


Fig.1. Human diffuse large B-cell lymphoma tissue was stained with anti-BOB.1 antibody

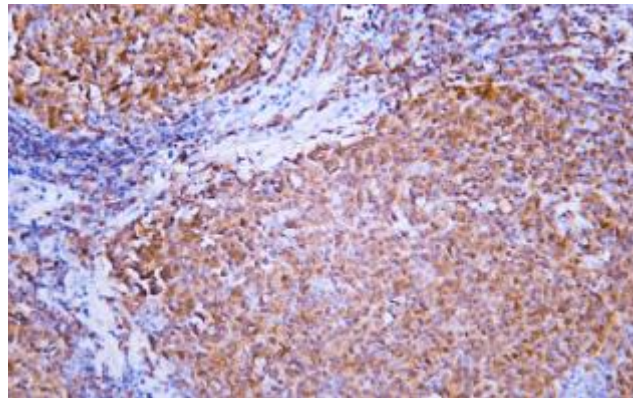


Fig.2. Human follicular lymphoma tissue was stained with anti-BOB.1 antibody

Note:

The product listed herein is for research use only and is not intended for use in human or clinical diagnosis.