

IHCAb™ Synaptophysin (BGT533) Mouse mAb

Cat #: B-IMW6105

Size: 100 µL

Storage: Store at -20°C. Avoid repeated freeze / thaw cycles.

Background

This gene encodes an integral membrane protein of small synaptic vesicles in brain and endocrine cells. The protein also binds cholesterol and is thought to direct targeting of vesicle-associated membrane protein 2 (synaptobrevin) to intracellular compartments. Mutations in this gene are associated with X-linked mental retardation (XLMR).

Product Information

Applications/Dilution: IHC-p 1:200-400, WB 1:200-1000

Isotype/Source: Mouse, Monoclonal/IgG1, Kappa

Specificity: The antibody can specifically recognize human Synaptophysin protein.

Subcellular Location: Cytoplasmic

Expression: Pancreas/ Colon

Formulation: PBS, pH7.2, 0.03% Porcolin 300, containing stabilizing protein.

Storage: Store at -15°C to -25°C

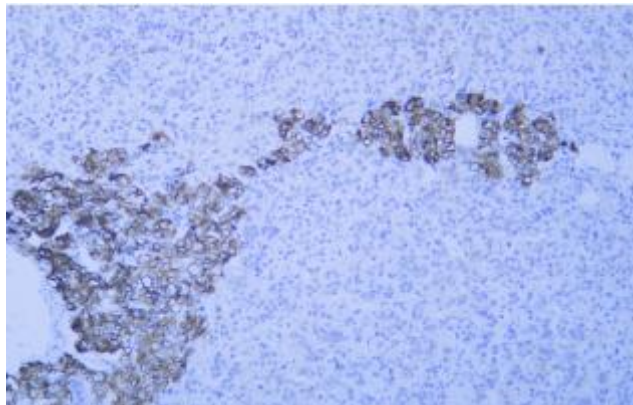


Fig. Human adrenal gland tissue was stained with Anti-Synaptophysin Antibody

Note:

The product listed herein is for research use only and is not intended for use in human or clinical diagnosis.