

IHCAb™ Stathmin (BGT396) Mouse mAb

Cat #: B-IMW6104

Size: 100 µL

Storage: Store at -20°C. Avoid repeated freeze / thaw cycles.

Background

This gene belongs to the stathmin family of genes. It encodes a ubiquitous cytosolic phosphoprotein proposed to function as an intracellular relay integrating regulatory signals of the cellular environment. The encoded protein is involved in the regulation of the microtubule filament system by destabilizing microtubules. It prevents assembly and promotes disassembly of microtubules. Multiple transcript variants encoding different isoforms have been found for this gene.

Product Information

Applications/Dilution: IHC-p 1:200-400, WB 500-1000

Isotype/Source: Monoclonal Mouse IgG2a, Kappa

Specificity: The antibody can specifically recognize human Stathmin protein. In western blotting of HeLa cell lysate, the antibody can label a 17 kDa band corresponding to Stathmin.

Subcellular Location: Cytoplasmic

Expression: Tonsil

Formulation: PBS, pH7.2, 0.03% Porcolin 300, containing stabilizing protein.

Storage: Store at -15°C to -25°C

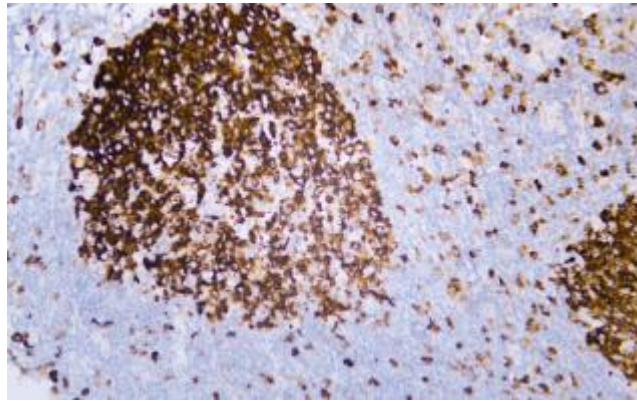


Fig. Human tonsil tissue was stained with Anti-Stathmin Antibody

Note:

The product listed herein is for research use only and is not intended for use in human or clinical diagnosis.