

IHCAb™ Prostate-Specific Antigen (PSA) (BGT-PSA) mouse mAb

Cat #: B-IMW6091

Size: 100 µL

Storage: Store at -20°C. Avoid repeated freeze / thaw cycles.

Background

Kallikreins are a subgroup of serine proteases having diverse physiological functions. Growing evidence suggests that many kallikreins are implicated in carcinogenesis and some have potential as novel cancer and other disease biomarkers. This gene is one of the fifteen kallikrein subfamily members located in a cluster on chromosome 19. Its protein product is a protease present in seminal plasma. It is thought to function normally in the liquefaction of seminal coagulum, presumably by hydrolysis of the high molecular mass seminal vesicle protein. Serum level of this protein, called PSA in the clinical setting, is useful in the diagnosis and monitoring of prostatic carcinoma. Alternate splicing of this gene generates several transcript variants encoding different isoforms.

Product Information

Applications/Dilution: IHC-p 1:100-500, WB 1:200-1000. IF 1:50-200

Isotype/Source: Mouse, Monoclonal/IgG1, Kappa

Specificity: This antibody detects endogenous levels of human Prostate-Specific Antigen(PSA). Heat-induced epitope retrieval (HIER) TRIS-EDTA of pH8.0 was highly recommended as antigen repair method in paraffin se

Subcellular Location: Secreted

Expression: Leukocyte,PNS,Prostate

Formulation: Liquid in PBS containing 50% glycerol, 0.5% BSA and 0.02% sodium azide.

Storage: Store at -15°C to -25°C

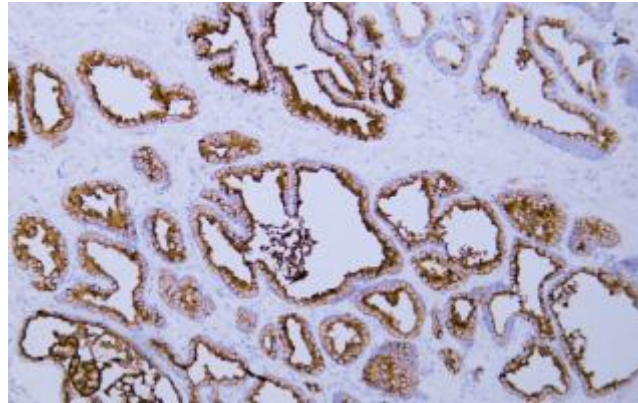


Fig.1. Human prostate tissue was stained with Anti-Prostate-Specific Antigen Antibody.

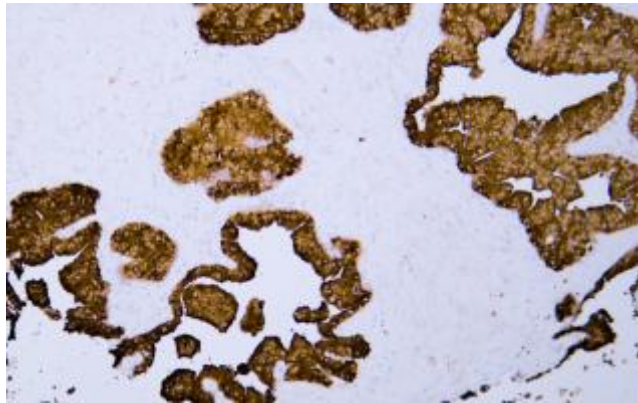


Fig.2. Human prostatic adenocarcinoma tissue was stained with Anti-Prostate-Specific Antigen Antibody

Note:

The product listed herein is for research use only and is not intended for use in human or clinical diagnosis.