

IHCAb™ Prolactin (BGT-PRL) mouse mAb

Cat #: B-IMW6089

Size: 100 µL

Storage: Store at -20°C. Avoid repeated freeze / thaw cycles.

Background

This gene encodes the anterior pituitary hormone prolactin. This secreted hormone is a growth regulator for many tissues, including cells of the immune system. It may also play a role in cell survival by suppressing apoptosis, and it is essential for lactation. Alternative splicing results in multiple transcript variants that encode the same protein.

Product Information

Applications/Dilution: IHC-p 1:100-500. IF 1:50-200

Isotype/Source: Mouse, Monoclonal/IgG1, Kappa

Specificity: This antibody detects endogenous levels of human Prolactin. Heat-induced epitope retrieval (HIER) TRIS-EDTA of pH8.0 was highly recommended as antigen repair method in paraffin section

Subcellular Location: Secreted

Expression: Mammary gland,Pituitary,Testis

Formulation: Liquid in PBS containing 50% glycerol, 0.5% BSA and 0.02% sodium azide..

Storage: Store at -15°C to -25°C

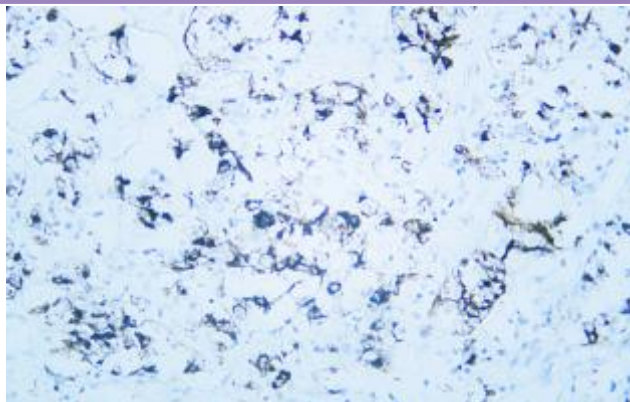


Fig. Human pituitary adenoma tissue was stained with Anti-Prolactin Antibody.

Note:

The product listed herein is for research use only and is not intended for use in human or clinical diagnosis.