

IHCAb™ hCG (BGT-HCG) mouse mAb

Cat #: B-IMW6064

Size: 100 µL

Storage: Store at -20°C. Avoid repeated freeze / thaw cycles.

Background

The four human glycoprotein hormones chorionic gonadotropin (CG), luteinizing hormone (LH), follicle stimulating hormone (FSH), and thyroid stimulating hormone (TSH) are dimers consisting of alpha and beta subunits that are associated noncovalently. The alpha subunits of these hormones are identical, however, their beta chains are unique and confer biological specificity. The protein encoded by this gene is the alpha subunit and belongs to the glycoprotein hormones alpha chain family. Two transcript variants encoding different isoforms have been found for this gene.

Product Information

Applications/Dilution: IHC-p 1:100-500, WB 1:200-1000

Isotype/Source: Mouse, Monoclonal/IgG2a, Kappa

Specificity: This antibody detects endogenous levels of human hCG. Heat-induced epitope retrieval (HIER) TRIS-EDTA of pH8.0 was highly recommended as antigen repair method in paraffin section

Subcellular Location: Secreted

Expression: Pituitary,Placenta

Formulation: Liquid in PBS containing 50% glycerol, 0.5% BSA and 0.02% sodium azide.

Storage: Store at -15°C to -25°C

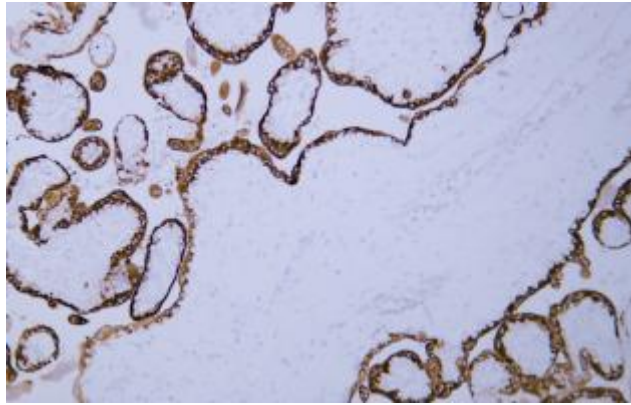


Fig. Human placenta tissue was stained with Anti-hCG α Antibody.

Note:

The product listed herein is for research use only and is not intended for use in human or clinical diagnosis.