

IHCAb™ Cytokeratin 8 (BGT535) Mouse mAb

Cat #: B-IMW6058

Size: 100 µL

Storage: Store at -20°C. Avoid repeated freeze / thaw cycles.

Background

keratin 8(KRT8) Homo sapiens This gene is a member of the type II keratin family clustered on the long arm of chromosome 12. Type I and type II keratins heteropolymerize to form intermediate-sized filaments in the cytoplasm of epithelial cells. The product of this gene typically dimerizes with keratin 18 to form an intermediate filament in simple single-layered epithelial cells. This protein plays a role in maintaining cellular structural integrity and also functions in signal transduction and cellular differentiation. Mutations in this gene cause cryptogenic cirrhosis. Alternatively spliced transcript variants have been found for this gene.

Product Information

Applications/Dilution: IHC-p 1:200-400, WB 1:200-1000

Isotype/Source: Monoclonal Mouse IgG2a, kappa

Specificity: The antibody can specifically recognize human CK8 protein, and shows no cross reaction with CK1, 4, 5, 6, 7, 10, 15, 16, 17, 18, 20.

Subcellular Location: Cytoplasmic, Membranous

Expression: Liver/ Tonsil

Formulation: PBS, pH7.2, 0.03% Porcolin 300, containing stabilizing protein.

Storage: Store at -15°C to -25°C

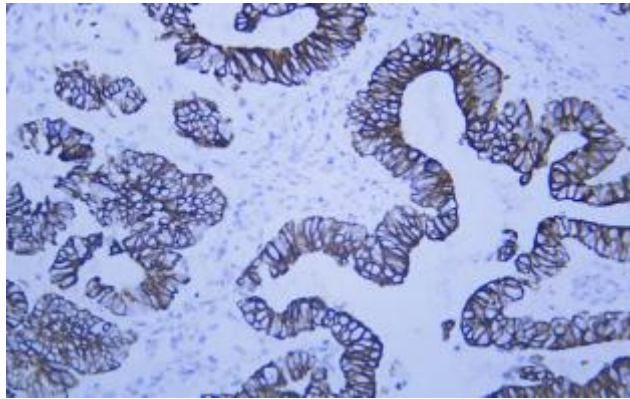


Fig.1. Human colon carcinoma tissue was stained with Anti-Cytokeratin 8. Secondary Antibody was Biogradetech POLY™ Polymer HRP Goat Anti-Rabbit/Mouse IgG(H+L) Secondary Antibody (B-IMWRS11).

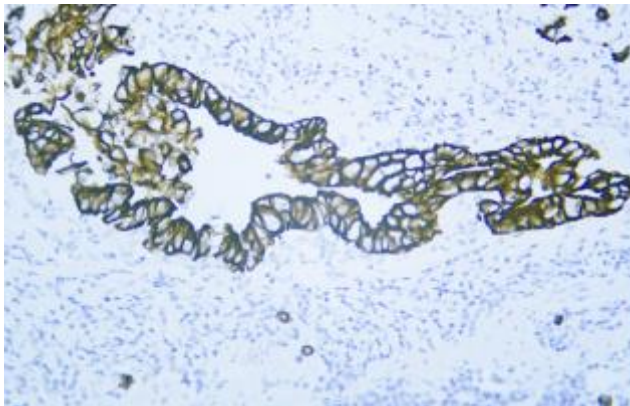


Fig.2. Human gastric adenocarcinoma tissue was stained with Anti-Cytokeratin 8 Antibody. Secondary Antibody was Biogradetech POLY™ Polymer HRP Goat Anti-Rabbit/Mouse IgG(H+L) Secondary Antibody (B-IMWRS11).

Note:

The product listed herein is for research use only and is not intended for use in human or clinical diagnosis.