

IHCAb™ Cytokeratin 14 (PT1674) mouse mAb

Cat #: B-IMW6031

Size: 100 µL

Storage: Store at -20°C. Avoid repeated freeze / thaw cycles.

Background

This gene encodes a member of the keratin family, the most diverse group of intermediate filaments. This gene product, a type I keratin, is usually found as a heterotetramer with two keratin 5 molecules, a type II keratin. Together they form the cytoskeleton of epithelial cells. Mutations in the genes for these keratins are associated with epidermolysis bullosa simplex. At least one pseudogene has been identified at 17p12-p11.

Product Information

Applications/Dilution: WB 500-2000 IHC-p 1:100-500. IF 1:50-200

Isotype/Source: Mouse, Monoclonal/IgG1, Kappa

Specificity: This antibody detects endogenous levels of human Cytokeratin 14. Heat-induced epitope retrieval (HIER) TRIS-EDTA of pH8.0 was highly recommended as antigen repair method in paraffin section.

Subcellular Location: Cytoplasm. Nucleus. Expressed in both as a filamentous pattern

Expression: Expressed in the corneal epithelium (at protein level) (PubMed:26758872). Detected in the basal layer, lowered within the more apically located layers specifically in the stratum spinosum, stratum granulosum but is not detected in stratum corneum. Strongly expressed in the outer root sheath of anagen follicles but not in the germinative matrix, inner root sheath or hair (PubMed:9457912). Found in keratinocytes surrounding the club hair during telogen (PubMed:9457912)

Formulation: Liquid in PBS containing 50% glycerol, 0.5% BSA and 0.02% sodium azide.

Storage: Store at -15°C to -25°C

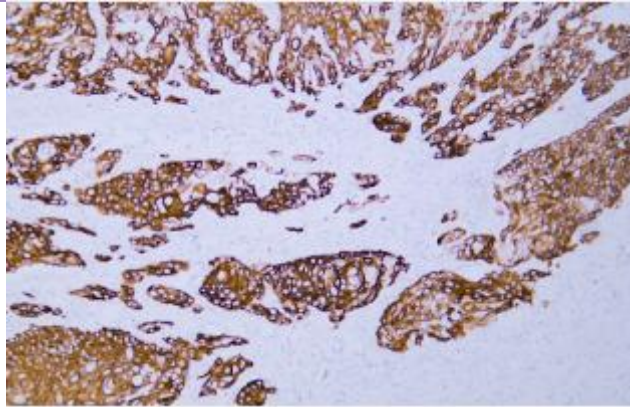


Fig.1. Human cervical squamous cell carcinoma tissue was stained with Anti-Cytokeratin 14 Antibody.

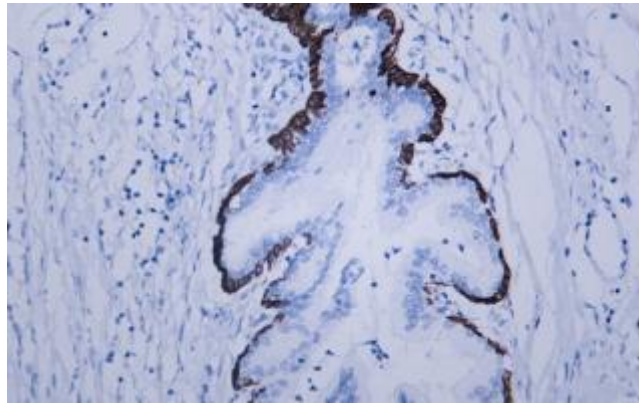


Fig.2. Human prostate tissue was stained with Anti-Cytokeratin 14 Antibody.

Note:

The product listed herein is for research use only and is not intended for use in human or clinical diagnosis.