

## IHCAb™ CD2 (BGT529) Mouse mAb

Cat #: B-IMW6021

Size: 100 µL

Storage: Store at -20°C. Avoid repeated freeze / thaw cycles.

### Background

The protein encoded by this gene is a surface antigen found on all peripheral blood T-cells. The encoded protein interacts with LFA3 (CD58) on antigen presenting cells to optimize immune recognition. A locus control region (LCR) has been found in the 3' flanking sequence of this gene.

### Product Information

**Applications/Dilution:** IHC-p 1:200-400, WB 1:200-1000

**Isotype/Source:** Monoclonal Mouse IgG2b, Kappa

**Specificity:** The antibody can specifically recognize human CD2 protein.

**Subcellular Location:** Membranous

**Expression:** Tonsil

**Formulation:** PBS, pH7.2, 0.03% Porcolin 300, containing stabilizing protein.

**Storage:** Store at -15°C to -25°C

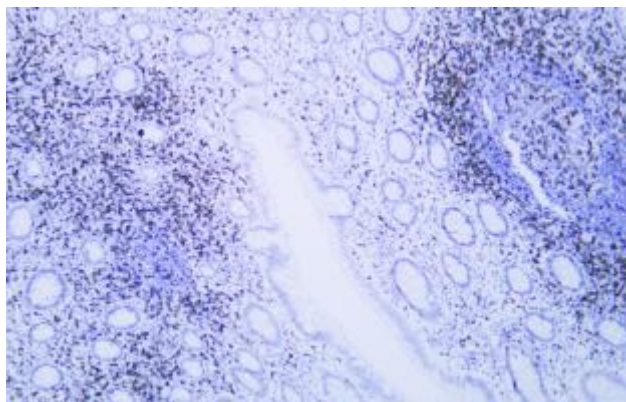


Fig.1. Human appendix tissue was stained with anti-CD2 antibody. Secondary Antibody was Biogradetech POLY™ Polymer HRP Goat Anti-Rabbit/Mouse IgG(H+L) Secondary Antibody (B-IMWRS11).

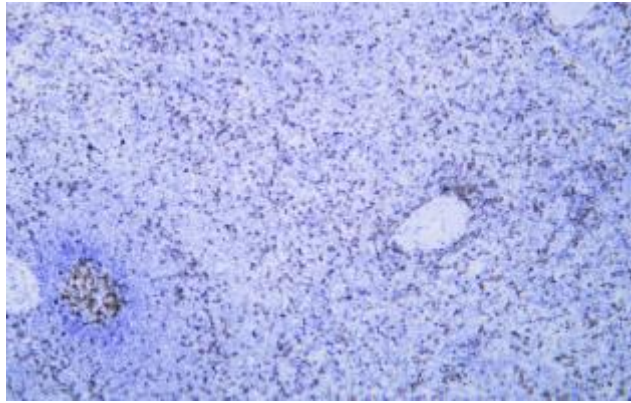


Fig.2. Human spleen tissue was stained with anti-CD2 antibody. Secondary Antibody was Biogradetech POLY™ Polymer HRP Goat Anti-Rabbit/Mouse IgG(H+L) Secondary Antibody (B-IMWRS11).

**Note:**

The product listed herein is for research use only and is not intended for use in human or clinical diagnosis.