

IHCab™ CD45 (LCA) (PT1659) mouse mAb

Cat #: B-IMW6018

Size: 100 µL

Storage: Store at -20°C. Avoid repeated freeze / thaw cycles.

Background

The protein encoded by this gene is a member of the protein tyrosine phosphatase (PTP) family. PTPs are known to be signaling molecules that regulate a variety of cellular processes including cell growth, differentiation, mitosis, and oncogenic transformation. This PTP contains an extracellular domain, a single transmembrane segment and two tandem intracytoplasmic catalytic domains, and thus is classified as a receptor type PTP. This PTP has been shown to be an essential regulator of T- and B-cell antigen receptor signaling. It functions through either direct interaction with components of the antigen receptor complexes, or by activating various Src family kinases required for the antigen receptor signaling. This PTP also suppresses JAK kinases, and thus functions as a regulator of cytokine receptor signaling. Alternatively spliced transcripts variants of this gene.

Product Information

Applications/Dilution: IHC-p 1:300-500, WB 1:500-2000

Isotype/Source: Mouse, Monoclonal/IgG2b, Kappa

Specificity: This antibody detects endogenous levels of human CD45 (LCA). Heat-induced epitope retrieval (HIER) Citrate buffer of pH6.0 was highly recommended as antigen repair method in paraffin section

Subcellular Location: Cell membrane ; Single-pass type I membrane protein . Membrane raft . Colocalized with DPP4 in membrane rafts

Expression: Isoform 1: Detected in thymocytes. Isoform 2: Detected in thymocytes. Isoform 3: Detected in thymocytes. Isoform 4: Not detected in thymocytes. Isoform 5: Detected in thymocytes. Isoform 6: Not detected in thymocytes. Isoform 7: Detected in thymocytes. Isoform 8: Not detected in thymocytes

Formulation: Liquid in PBS containing 50% glycerol, 0.5% BSA and 0.02% sodium azide.

Storage: Store at -15°C to -25°C

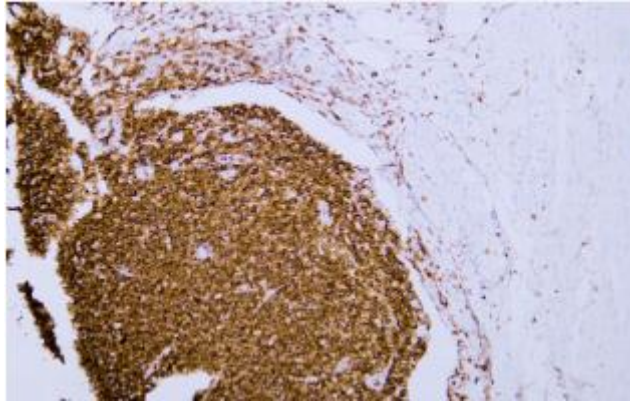


Fig.1. Human appendix tissue was stained with Anti-CD45 Antibody.

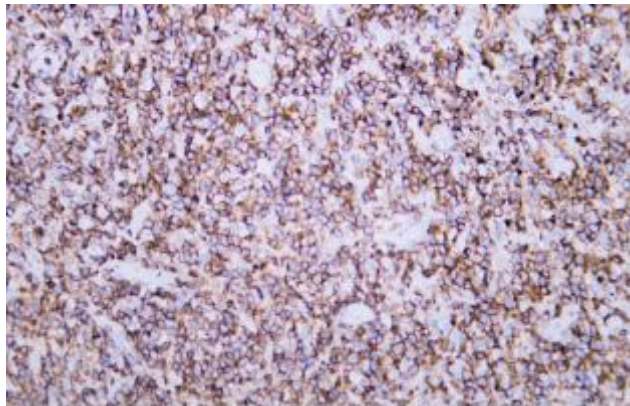


Fig.2. Human diffuse large B-cell lymphoma tissue was stained with Anti-CD45 Antibody.

Note:

The product listed herein is for research use only and is not intended for use in human or clinical diagnosis.