

IHCAb™ CD23 (BGT-CD23) mouse mAb

Cat #: B-IMW6014

Size: 100 µL

Storage: Store at -20°C. Avoid repeated freeze / thaw cycles.

Background

The protein encoded by this gene is a B-cell specific antigen, and a low-affinity receptor for IgE. It has essential roles in B cell growth and differentiation, and the regulation of IgE production. This protein also exists as a soluble secreted form, then functioning as a potent mitogenic growth factor. Alternatively spliced transcript variants encoding different isoforms have been described for this gene.

Product Information

Applications/Dilution: IHC-p 1:100-500. IF 1:50-200

Isotype/Source: Mouse, Monoclonal/IgG1, Kappa

Specificity: This antibody detects endogenous levels of human CD23. Heat-induced epitope retrieval (HIER) Citrate buffer of pH6.0 was highly recommended as antigen repair method in paraffin section

Subcellular Location: Cell membrane; Single-pass type II membrane protein. Cell membrane; Lipid-anchor. Secreted. Also exists as a soluble excreted form, sCD23

Expression: B-cell, Blood

Formulation: Liquid in PBS containing 50% glycerol, 0.5% BSA and 0.02% sodium azide.

Storage: Store at -15°C to -25°C

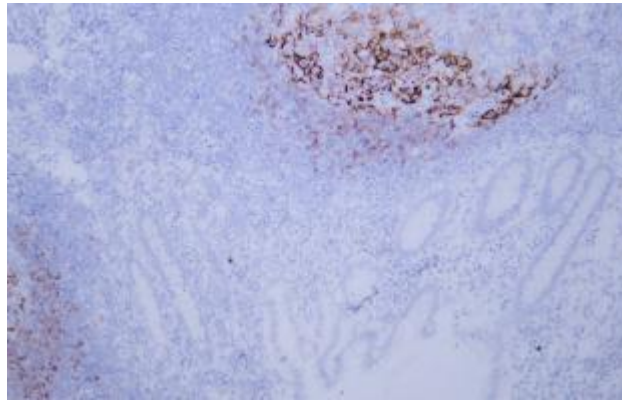


Fig. Human appendix tissue was stained with anti-CD23 antibody.

Note:

The product listed herein is for research use only and is not intended for use in human or clinical diagnosis.