

## IHCAb™ Cytokeratin 6 (BGT052) Mouse mAb

Cat #: B-IMW4327

Size: 100 µL

Storage: Store at -20°C. Avoid repeated freeze / thaw cycles.

### Background

The protein encoded by this gene is a member of the keratin gene family. The type II cytokeratins consist of basic or neutral proteins which are arranged in pairs of heterotypic keratin chains coexpressed during differentiation of simple and stratified epithelial tissues. As many as six of this type II cytokeratin (KRT6) have been identified; the multiplicity of the genes is attributed to successive gene duplication events. The genes are expressed with family members KRT16 and/or KRT17 in the filiform papillae of the tongue, the stratified epithelial lining of oral mucosa and esophagus, the outer root sheath of hair follicles, and the glandular epithelia. This KRT6 gene in particular encodes the most abundant isoform. Mutations in these genes have been associated with pachyonychia congenita. In addition, peptides from the C-terminal region of the protein have antimicrobial activity against bacterial pathoge.

### Product Information

**Applications/Dilution:** IHC-p 1:200-400, WB 500-1000

**Isotype/Source:** Monoclonal Mouse IgG2a, Kappa

**Specificity:** The antibody can specifically recognize human CK6 protein, and shows no cross reaction with CK5. In western blotting of Hela, A431, A549 and HEK293 cell lysates, the antibody can label a 56 kDa band

**Subcellular Location:** Cytoplasmic, Membranous

**Expression:** Tonsil/ Prostate

**Formulation:** PBS, pH7.2, 0.03% Porcolin 300, containing stabilizing protein

**Storage:** Store at -15°C to -25°C

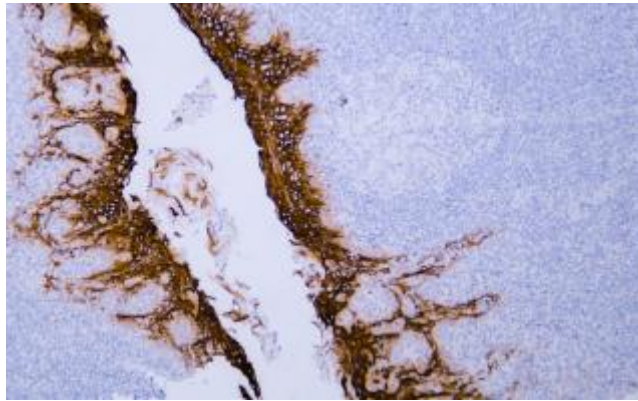


Fig. Human tonsil tissue was stained with Anti-Cytokeratin 6 Antibody

**Note:**

The product listed herein is for research use only and is not intended for use in human or clinical diagnosis.