

IHCAb™ Claudin 18 mouse mAb (BGT158)

Cat #: B-IMW4323

Size: 100 µL

Storage: Store at -20°C. Avoid repeated freeze / thaw cycles.

Background

This gene encodes a member of the claudin family. Claudins are integral membrane proteins and components of tight junction strands. Tight junction strands serve as a physical barrier to prevent solutes and water from passing freely through the paracellular space between epithelial or endothelial cell sheets, and also play critical roles in maintaining cell polarity and signal transductions. This gene is upregulated in patients with ulcerative colitis and highly overexpressed in infiltrating ductal adenocarcinomas. PKC/MAPK/AP-1 (protein kinase C/mitogen-activated protein kinase/activator protein-1) dependent pathway regulates the expression of this gene in gastric cells. Alternatively spliced transcript variants encoding different isoforms have been identified.

Product Information

Applications/Dilution: IHC-p 1:100-500, IF 1:100-500

Isotype/Source: Mouse, Monoclonal

Specificity: The antibody can specifically recognize both human Claudin 18.1 and Claudin 18.2 protein

Subcellular Location: Cell junction, tight junction . Cell membrane ; Multi-pass membrane protein . Localizes to tight junctions in epithelial cells

Expression: Isoform A1: Expression is restricted to the lung (PubMed:19047087). Isoform A2: Expression is restricted to the stomach mucosa where it is predominantly observed in the epithelial cells of the pit region and the base of the gastric glands including exocrine and endocrine cells (at protein level) (PubMed:19047087).

Formulation: Liquid in PBS containing 50% glycerol, 0.5% BSA and 0.155% sodium azide

Storage: Store at -15°C to -25°C

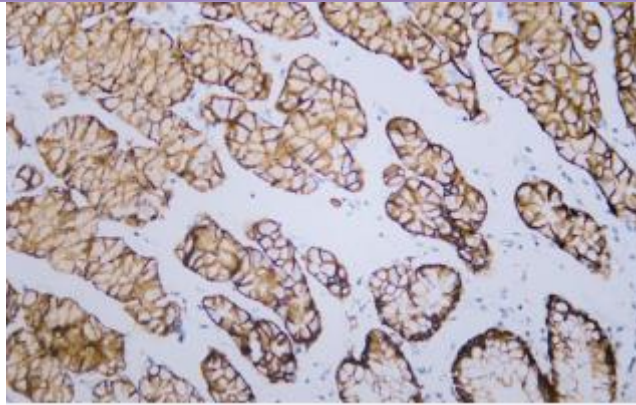


Fig. Human stomach tissue was stained with Anti-Claudin 18 Antibody

Note:

The product listed herein is for research use only and is not intended for use in human or clinical diagnosis.