

IHCAb™ Claudin 7 (BGT443) Mouse mAb

Cat #: B-IMW4161

Size: 100 µL

Storage: Store at -20°C. Avoid repeated freeze / thaw cycles.

Background

This gene encodes a member of the claudin family. Claudins are integral membrane proteins and components of tight junction strands. Tight junction strands serve as a physical barrier to prevent solutes and water from passing freely through the paracellular space between epithelial or endothelial cell sheets, and also play critical roles in maintaining cell polarity and signal transductions. Differential expression of this gene has been observed in different types of malignancies, including breast cancer, ovarian cancer, hepatocellular carcinomas, urinary tumors, prostate cancer, lung cancer, head and neck cancers, thyroid carcinomas, etc.. Alternatively spliced transcript variants encoding different isoforms have been found.

Product Information

Applications/Dilution: IHC-p 1:200-400, WB 500-1000

Isotype/Source: Monoclonal Mouse IgG2b, Kappa

Specificity: The antibody can specifically recognize human Claudin 7 protein. In western blotting of LnCap cell lysate, the antibody can label a 22 kDa band corresponding to Claudin 7

Subcellular Location: Membranous

Expression: kidney

Formulation: PBS, pH7.2, 0.03% Porcolin 300, containing stabilizing protein

Storage: Store at -15°C to -25°C

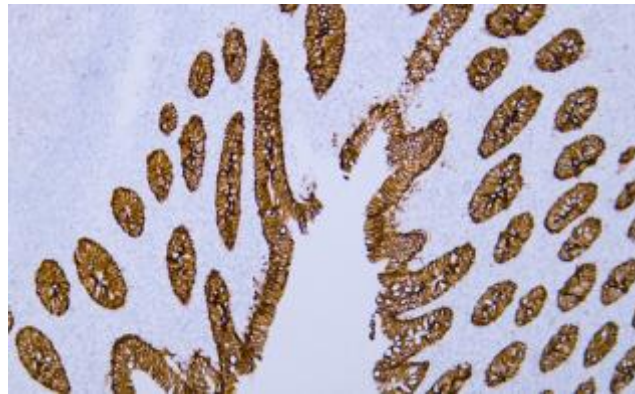


Fig. Human appendix tissue was stained with Anti-Claudin 7 Antibody

Note:

The product listed herein is for research use only and is not intended for use in human or clinical diagnosis.