

## IHCAb™ Cytokeratin 7 (BGT319) Mouse mAb

Cat #: B-IMW4148

Size: 100 µL

Storage: Store at -20°C. Avoid repeated freeze / thaw cycles.

### Background

keratin 7(KRT7) Homo sapiens The protein encoded by this gene is a member of the keratin gene family. The type II cytokeratins consist of basic or neutral proteins which are arranged in pairs of heterotypic keratin chains coexpressed during differentiation of simple and stratified epithelial tissues. This type II cytokeratin is specifically expressed in the simple epithelia lining the cavities of the internal organs and in the gland ducts and blood vessels. The genes encoding the type II cytokeratins are clustered in a region of chromosome 12q12-q13. Alternative splicing may result in several transcript variants; however, not all variants have been fully described.

### Product Information

**Applications/Dilution:** IHC-p 1:200-400, WB 500-1000

**Isotype/Source:** Mouse, Monoclonal/IgG1, Kappa

**Specificity:** The antibody can specifically recognize human CK7 protein, and shows no cross reaction with CK1, 4, 5, 6, 8, 10, 14, 17, 18, 19, 20. In western blotting of HeLa, A431, A549 and HeLa cell lysates

**Subcellular Location:** Cytoplasmic, Membranous

**Expression:** Pancreas

**Formulation:** PBS, pH7.2, 0.03% Porcolin 300, containing stabilizing protein

**Storage:** Store at -15°C to -25°C

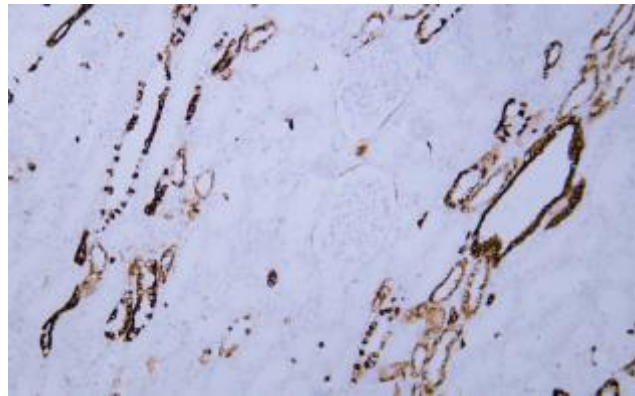


Fig. Human kidney tissue was stained with Anti-Cytokeratin 7 Antibody

**Note:**

The product listed herein is for research use only and is not intended for use in human or clinical diagnosis.