

## IHCAb™ S100A1 mouse mAb (PT1428)

Cat #: B-IMW4119

Size: 100 µL

Storage: Store at -20°C. Avoid repeated freeze / thaw cycles.

### Background

S100 calcium binding protein A1(S100A1) Homo sapiens The protein encoded by this gene is a member of the S100 family of proteins containing 2 EF-hand calcium-binding motifs. S100 proteins are localized in the cytoplasm and/or nucleus of a wide range of cells, and involved in the regulation of a number of cellular processes such as cell cycle progression and differentiation. S100 genes include at least 13 members which are located as a cluster on chromosome 1q21. This protein may function in stimulation of Ca<sup>2+</sup>-induced Ca<sup>2+</sup> release, inhibition of microtubule assembly, and inhibition of protein kinase C-mediated phosphorylation. Reduced expression of this protein has been implicated in cardiomyopathies.

### Product Information

**Applications/Dilution:** IHC-p 1:100-500, IF 1:100-500

**Isotype/Source:** Mouse, Monoclonal

**Specificity:** This antibody detects endogenous levels of S100A1 at Human

**Subcellular Location:** Cytoplasm . Sarcoplasmic reticulum . Mitochondrion

**Expression:** Highly prevalent in heart (PubMed:12804600, PubMed:1384693). Also found in lesser quantities in skeletal muscle and brain (PubMed:1384693)

**Formulation:** Liquid in PBS containing 50% glycerol, 0.5% BSA and 0.123% sodium azide

**Storage:** Store at -15°C to -25°C

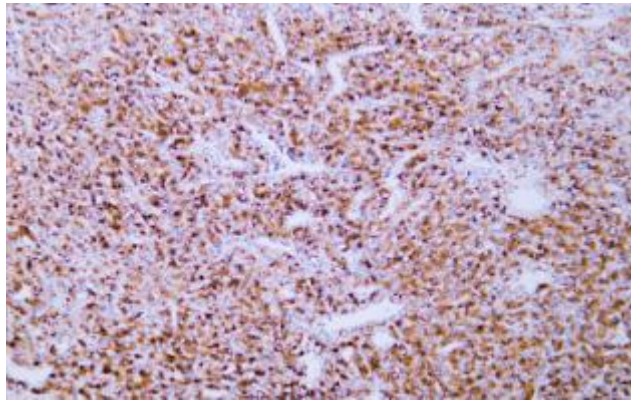


Fig. Human renal clear cell carcinoma tissue was stained with Anti-S100A1 Antibody

**Note:**

The product listed herein is for research use only and is not intended for use in human or clinical diagnosis.