

## IHCAb™ Insulin mouse mAb (PT0156)

Cat #: B-IMW4117

Size: 100 µL

Storage: Store at -20°C. Avoid repeated freeze / thaw cycles.

### Background

After removal of the precursor signal peptide, proinsulin is post-translationally cleaved into three peptides: the B chain and A chain peptides, which are covalently linked via two disulfide bonds to form insulin, and C-peptide. Binding of insulin to the insulin receptor (INSR) stimulates glucose uptake. A multitude of mutant alleles with phenotypic effects have been identified. There is a read-through gene, INS-IGF2, which overlaps with this gene at the 5' region and with the IGF2 gene at the 3' region. Alternative splicing results in multiple transcript variants.

### Product Information

**Applications/Dilution:** IHC-p 1:100-500, WB 1:200-1000, IF 1:100-500

**Isotype/Source:** Mouse, Monoclonal

**Specificity:** This antibody detects endogenous levels of Insulin at Human

**Subcellular Location:** Secreted

**Expression:** Cytoplasmic

**Formulation:** Liquid in PBS containing 50% glycerol, 0.5% BSA and 0.26% sodium azide

**Storage:** Store at -15°C to -25°C

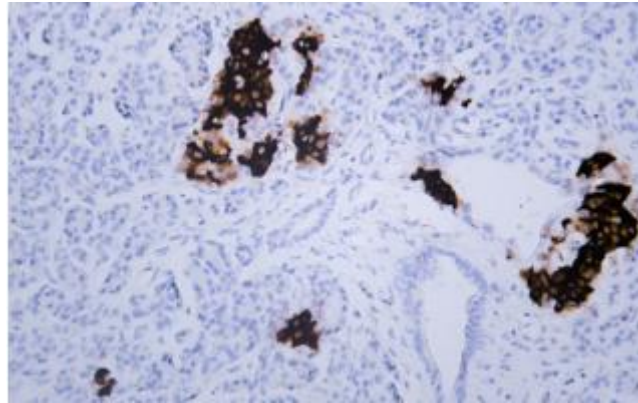


Fig. Human pancreas tissue was stained with Anti-Insulin Antibody

**Note:**

The product listed herein is for research use only and is not intended for use in human or clinical diagnosis.