

IHCAb™ KSP-Cadherin mouse mAb (PT0160)

Cat #: B-IMW4005

Size: 100 µL

Storage: Store at -20°C. Avoid repeated freeze / thaw cycles.

Background

This gene is a member of the cadherin superfamily, genes encoding calcium-dependent, membrane-associated glycoproteins. Mapped to a previously identified cluster of cadherin genes on chromosome 16q22.1, the gene localizes with superfamily members CDH1, CDH3, CDH5, CDH8 and CDH11. The protein consists of an extracellular domain containing 6 cadherin domains, a transmembrane region and a truncated cytoplasmic domain but lacks the prosequence and tripeptide HAV adhesion recognition sequence typical of most classical cadherins. Expression is exclusively in kidney, where the protein functions as the principal mediator of homotypic cellular recognition, playing a role in the morphogenic direction of tissue development. Alternatively spliced transcript variants encoding distinct isoforms have been identified.

Product Information

Applications/Dilution: IHC-p 1:100-500, IF 1:100-500

Isotype/Source: Mouse, Monoclonal

Specificity: This antibody detects endogenous levels of KSP-Cadherin at Human

Subcellular Location: Cell membrane ; Single-pass type I membrane protein

Expression: Kidney specific

Formulation: Liquid in PBS containing 50% glycerol, 0.5% BSA and 0.05% sodium azide

Storage: Store at -15°C to -25°C

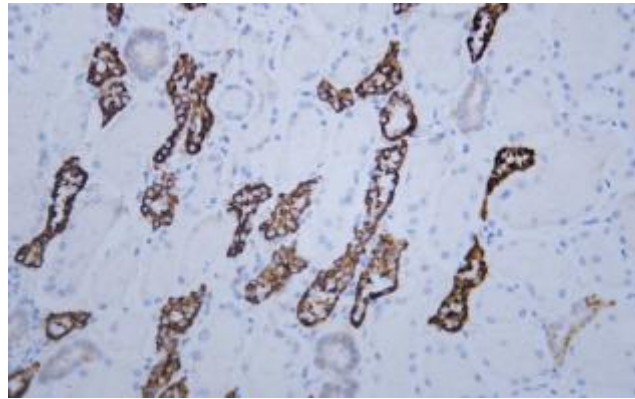


Fig. Human kidney tissue was stained with Anti-KSP-Cadherin Antibody

Note:

The product listed herein is for research use only and is not intended for use in human or clinical diagnosis.